

# TRANSISTOR MODULE

## SQD300AA100

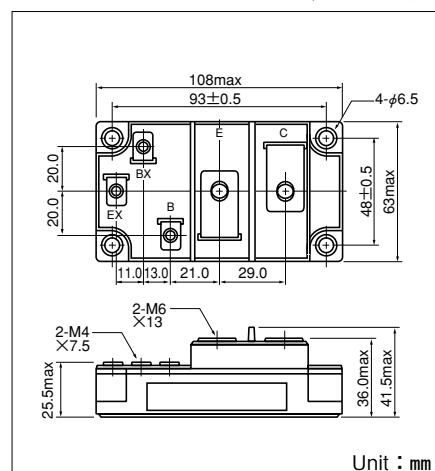
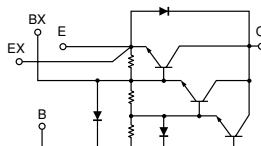
UL:E76102(M)

**SQD300AA100** is a Darlington power transistor module with a high speed, high power Darlington transistor. The transistor has a reverse paralled fast recovery diode. The mounting base of the module is electrically isolated from semiconductor elements for simple heatsink construction.

- $I_C=300A$ ,  $V_{CEX}=1000V$
- Low saturation voltage for higher efficiency.
- High DC current gain  $h_{FE}$
- Isolated mounting base

### (Applications)

Motor Control (VVVF), AC/DC Servo, UPS,  
Switching Power Supply, Ultrasonic Application



### Maximum Ratings

( $T_j=25^{\circ}C$  unless otherwise specified)

Symbol	Item		Conditions	Ratings	Unit
				<b>SQD300AA100</b>	
$V_{CBO}$	Collector-Base Voltage			1000	V
$V_{CEX}$	Collector-Emitter Voltage		$V_{BE}=-2V$	1000	V
$V_{EBO}$	Emitter-Base Voltage			7	V
$I_C$	Collector Current			300	A
$-I_C$	Reverse Collector Current			300	A
$I_B$	Base Current			16	A
$P_T$	Total power dissipation		$T_C=25^{\circ}C$	2000	W
$T_j$	Junction Temperature			$-40$ to $+150$	$^{\circ}C$
$T_{stg}$	Storage Temperature			$-40$ to $+125$	$^{\circ}C$
$V_{iso}$	Isolation Voltage		A.C.1minute	2500	V
	Mounting Torque	Mounting (M6)	Recommended Value 2.5-3.9 (25-40)	4.7 (48)	N·m (kgf·cm)
		Terminal (M6)	Recommended Value 2.5-3.9 (25-40)	4.7 (48)	
		Terminal (M4)	Recommended Value 1.0-1.4 (10-14)	1.5 (15)	
	Mass		Typical Value	520	g

### Electrical Characteristics

Symbol	Item		Conditions	Ratings		Unit
				Min.	Max.	
$I_{CBO}$	Collector Cut-off Current		$V_{CB}=1000V$		2.0	mA
$I_{EBO}$	Emitter Cut-off Current		$V_{EB}=7V$		800	mA
$V_{CEX(SUS)}$	Collector Emitter Sustaining Voltage		$I_C=60A$ , $I_{B2}=-12A$	1000		V
$h_{FE}$	DC Current Gain		$I_C=300A$ , $V_{CE}=2.8V$	75		
			$I_C=300A$ , $V_{CE}=5V$	100		
$V_{CE(sat)}$	Collector-Emitter Saturation Voltage		$I_C=300A$ , $I_B=6A$		2.5	V
$V_{BE(sat)}$	Base-Emitter Saturation Voltage		$I_C=300A$ , $I_B=6A$		3.5	V
$t_{on}$	Switching Time	On Time	$V_{CC}=600V$ , $I_C=300A$ $I_{B1}=6A$ , $I_{B2}=-6A$		3.0	$\mu s$
$t_s$		Storage Time			15.0	
$t_f$		Fall Time			3.0	
$V_{ECO}$	Collector-Emitter Reverse Voltage		$I_C=-300A$		1.8	V
$R_{th(j-c)}$	Thermal Impedance (junction to case)		Transistor part		0.063	$^{\circ}C/W$
			Diode part		0.3	

